

Questions

1. Do you like watching films?
2. What kind of films do you like?
3. How often do you go to the cinema?
4. Did you go to the cinema when you were a child?
5. What was the first film you watched?
6. Do you like to watch films alone or with friends?
7. Do you prefer foreign films or films made in your country?
8. Do you like to go to the cinema with your friends?

Please Note:

Our model answers teach you useful language and give you ideas. However, it is not a good idea to try and memorise them and repeat them in the IELTS exam.

Prepare for **{IELTS}**

a film buff = someone who is passionate about films and knows a lot about them

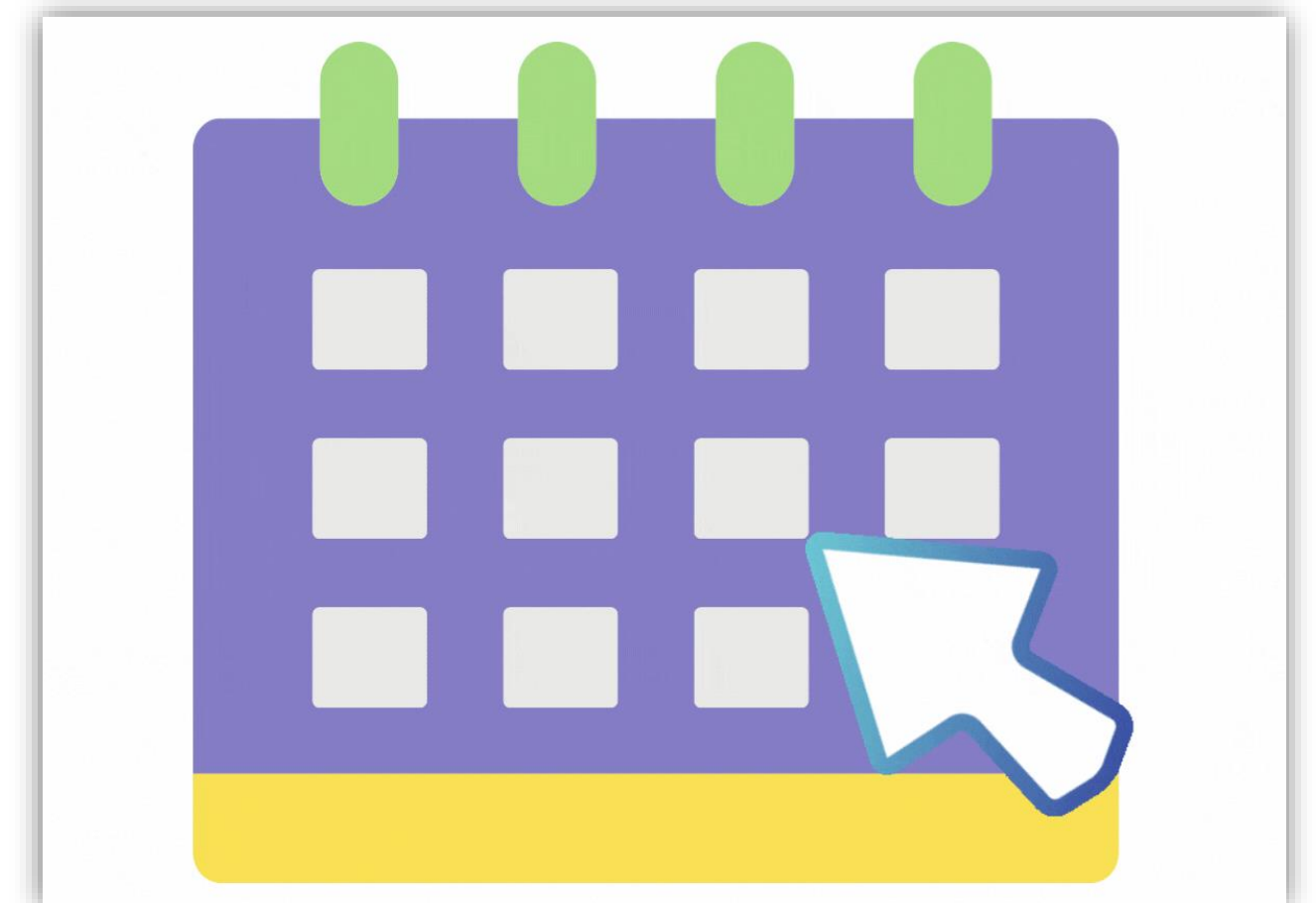
serial dramas = a TV show with a number of episodes of specific duration which are not self contained but which form part of a series of such episodes and which have a continuing theme

these days = nowadays; at present

from time to time = sometimes

1. Do you like watching films?

Yes, I do. I'm not **a film buff**, but I enjoy watching **movies**. I tend to watch **serial dramas** more than **films these days**, but I still watch films **from time to time**.



NATIVE SPEAKERS OF ENGLISH

Prepare for {IELTS}

a preference = one that you prefer

musicals = films with singing and dancing

thrillers = an exciting film usually involving crime

of all time = ever

a black/dark comedy = a film that jokes about sad or depressing topics

2. What kind of films do you like?

I don't really have **a preference**... I like a wide range of things from **musicals** to **thrillers**, but my favourite film **of all time** is Parasite, which is **a black comedy**, I guess.



NATIVE SPEAKERS OF ENGLISH

Prepare for {IELTS}



To be largely because = to be mainly/mostly because

my heavy workload = I have a lot of work to do

I'm up to my eyes in = I have a lot of work to do

To spare the time = to have the time to give to something

3. How often do you go to the cinema?

Not as much as I would like really and **this is largely because of my heavy workload. I'm up to my eyes in work at the moment so I can't spare the time.**



NATIVE SPEAKERS OF ENGLISH

Prepare for {IELTS}



To tend to = usually

pick 'n' mix (pick and mix) = a selection of sweets paid for by weight

a bucket of popcorn = a large quantity of popcorn

a treat = something you have on a special occasion

4. Did you go to the cinema when you were a child?

Not that often. **I tended to** go on my birthday, so I'd invite my friends and we'd have **pick 'n' mix** and **a bucket of popcorn**. It was a great birthday **treat**!



NATIVE SPEAKERS OF ENGLISH

Prepare for {IELTS}



I'm not entirely sure = I don't know

I vividly remember = I remember clearly

I was obsessed with = I couldn't stop watching

5. What was the first film you watched?

I'm not entirely sure, but the first film **I vividly remember** was Shrek. **I was obsessed with** the film and watched it over and over again.



NATIVE SPEAKERS OF ENGLISH

Prepare for {IELTS}



my mood = how I feel

sociable = you like spending time with others

mates (informal) = friends

to stream movies = to use an app like Netflix

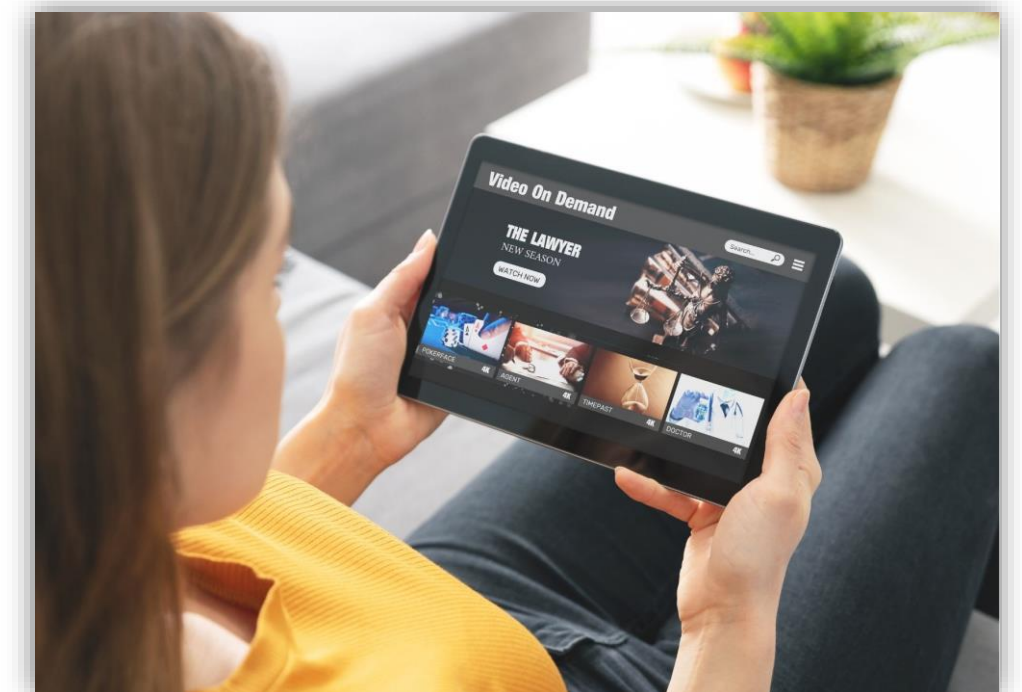
6. Do you like to watch films alone or with friends?

It depends on **my mood** and the film. If I'm feeling **sociable**, I tend to go to the cinema with my **mates**, but most of the time, **I stream movies** alone at home.



NATIVE SPEAKERS OF ENGLISH

Prepare for {IELTS}



domestic = made in your country

tricky = difficult; hard

subtitles = one or more lines of text, as a translation of dialogue in a foreign language

I've switched to = I've changed to

dubbed = the film is translated into another language and voice actors are used and the translated dialogue is matched to the lip movements in the film

7. Do you prefer foreign films or films made in your country?

When I was younger, I only watched **domestic** films because I found it too **tricky** to read **subtitles**. In the last few years though, **I've switched to** watching more foreign films. I watch them with subtitles rather than **dubbed** films.



Iain



Rebecca

NATIVE SPEAKERS OF ENGLISH

Prepare for {IELTS}



As a rule = usually

weird = strange; odd

time to kill = if you have nothing to do for a period of time

back (informal) = ago

to pass the time = to let time go by while doing something enjoyable

To catch a film (movie) = to go to the cinema and watch a film

8. Do you like to go to the cinema with your friends?

As a rule, yes because it feels a bit **weird** going alone. I only tend to go alone if I have **time to kill** so, for example, a few years **back**, I was waiting for my car to be repaired so **I passed the time** by **catching a film**.



NATIVE SPEAKERS OF ENGLISH

Prepare for {IELTS}

