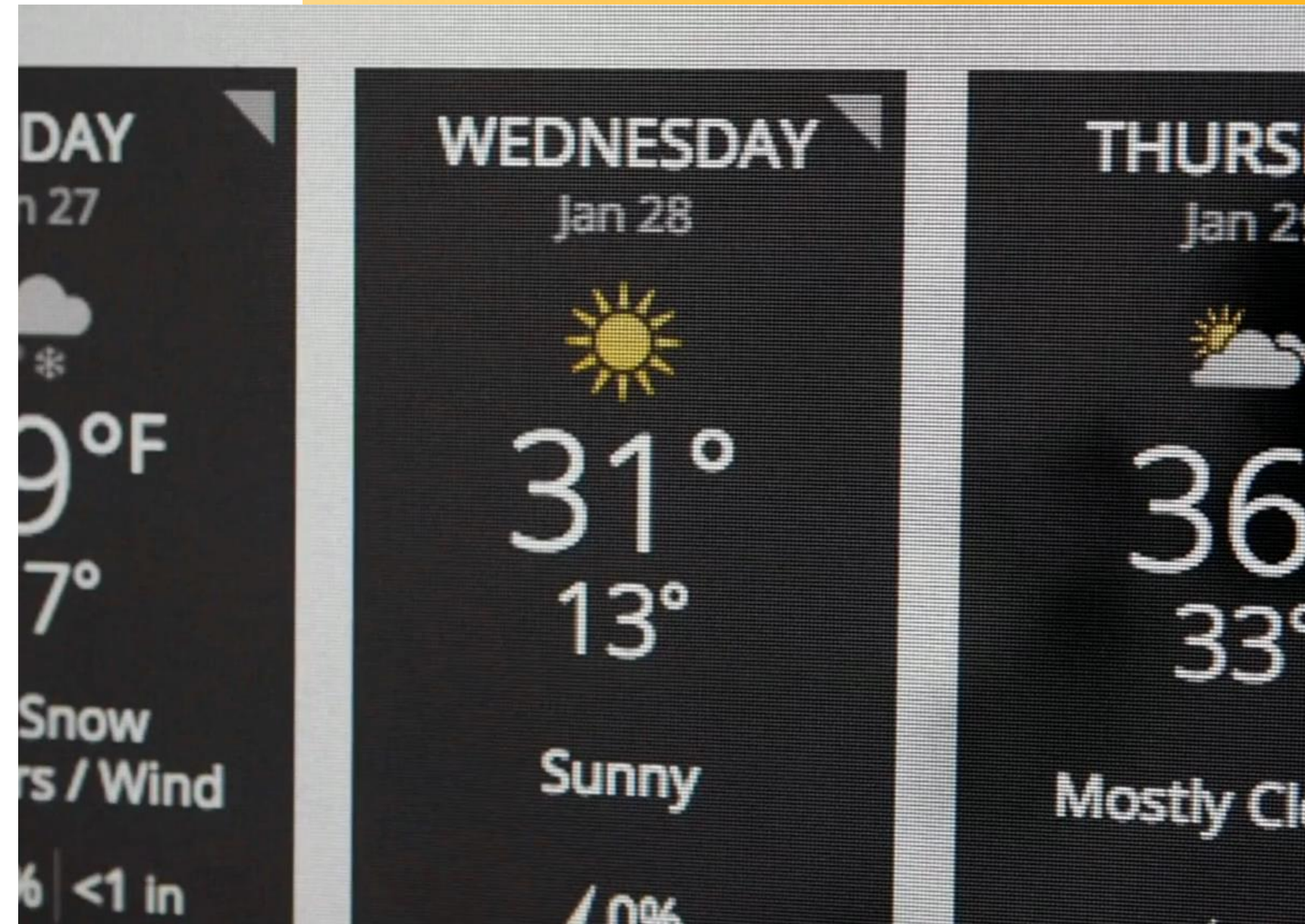


> Questions

1. What's the weather usually like in your hometown?
2. What is your favourite type of weather?
3. Do you like the weather in your hometown?
4. Do you like hot and dry weather?
5. What do you do in hot weather?
6. Do you prefer hot or cold weather?
7. Do you like wet weather?
8. Do you prefer wet or dry weather?
9. Would you like to visit a hot country?

Please Note:

Our model answers teach you useful language and give you ideas. However, it is not a good idea to try and memorise them and repeat them in the IELTS exam.



Prepare for {IELTS}

changeable weather = it changes a lot e.g. rain then sun

it's boiling hot = it's very hot

it's pouring down = it's raining heavily

1. What's the weather usually like in your hometown?

Quite **changeable**. One minute **it's boiling hot** and the next, **it's pouring down**.



NATIVE SPEAKERS OF ENGLISH

Prepare for {IELTS}



Definitely = 100%

I can't stand + verb + ing = I hate

sweaty = you smell of sweat

bright = sunny

mild = not too hot and not too cold

my preference = what I prefer

2. What is your favourite type of weather?

Definitely dry weather but not too hot. **I can't stand** **being** all hot and **sweaty** so a **bright**, but **mild** day is **my preference**.



NATIVE SPEAKERS OF ENGLISH

Prepare for {IELTS}



Not especially = we can use this to answer 'no' to a question

extreme = very very cold or very very hot

scorching = very very hot

freezing = very very cold

3. Do you like the weather in your hometown?

Not especially, because it is always too **extreme**. It's either **scorching** or **freezing**.



NATIVE SPEAKERS OF ENGLISH

Prepare for {IELTS}



I much prefer = we use 'much' to make it stronger in speaking

I'm not a fan of = I don't like

overly hot = too hot

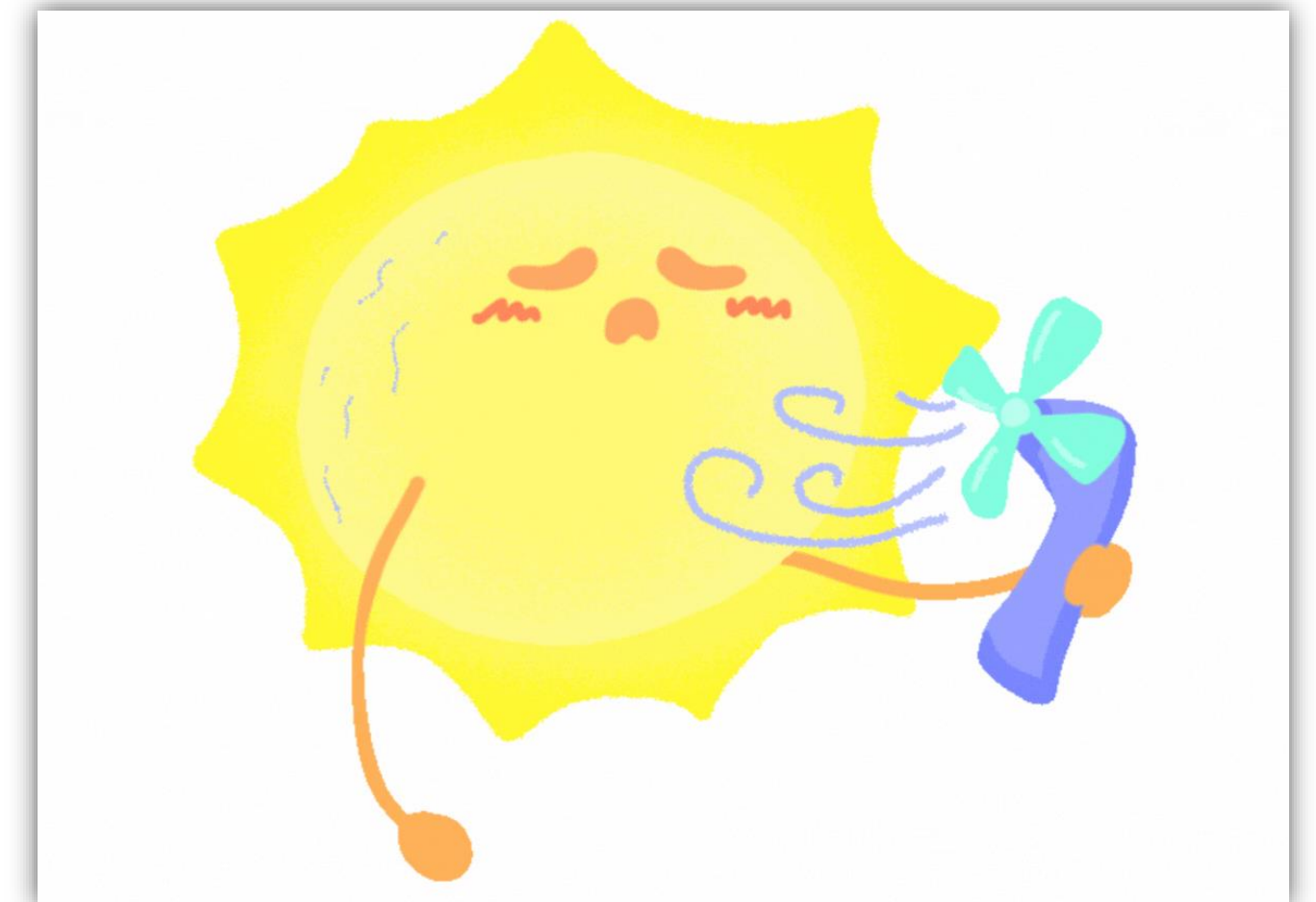
4. Do you like hot and dry weather?

I much prefer dry weather to wet but **I'm not a fan of overly hot** weather.



NATIVE SPEAKERS OF ENGLISH

Prepare for {IELTS}



a sun worshipper = a person who loves the sun

I tend to stay = I usually stay

in the shade = out of the sun

5. What do you do in hot weather?

I'm not **a sun worshipper** so **I tend to stay** inside if possible. If I have to be outside, I stay **in the shade**.



NATIVE SPEAKERS OF ENGLISH

Prepare for {IELTS}



tricky = difficult

I'm not keen on = I don't like

icy = very cold

freezing = very cold

I don't cope well = I don't deal with/handle it successfully

6. Do you prefer hot or cold weather?

That's **tricky** because **I'm not keen on icy** or **freezing** weather but **I don't cope well** in hot weather either.

A mild spring day is perfect.



NATIVE SPEAKERS OF ENGLISH

Prepare for {IELTS}



to rain heavily = to rain a lot; to pour down

a nuisance = an annoying thing

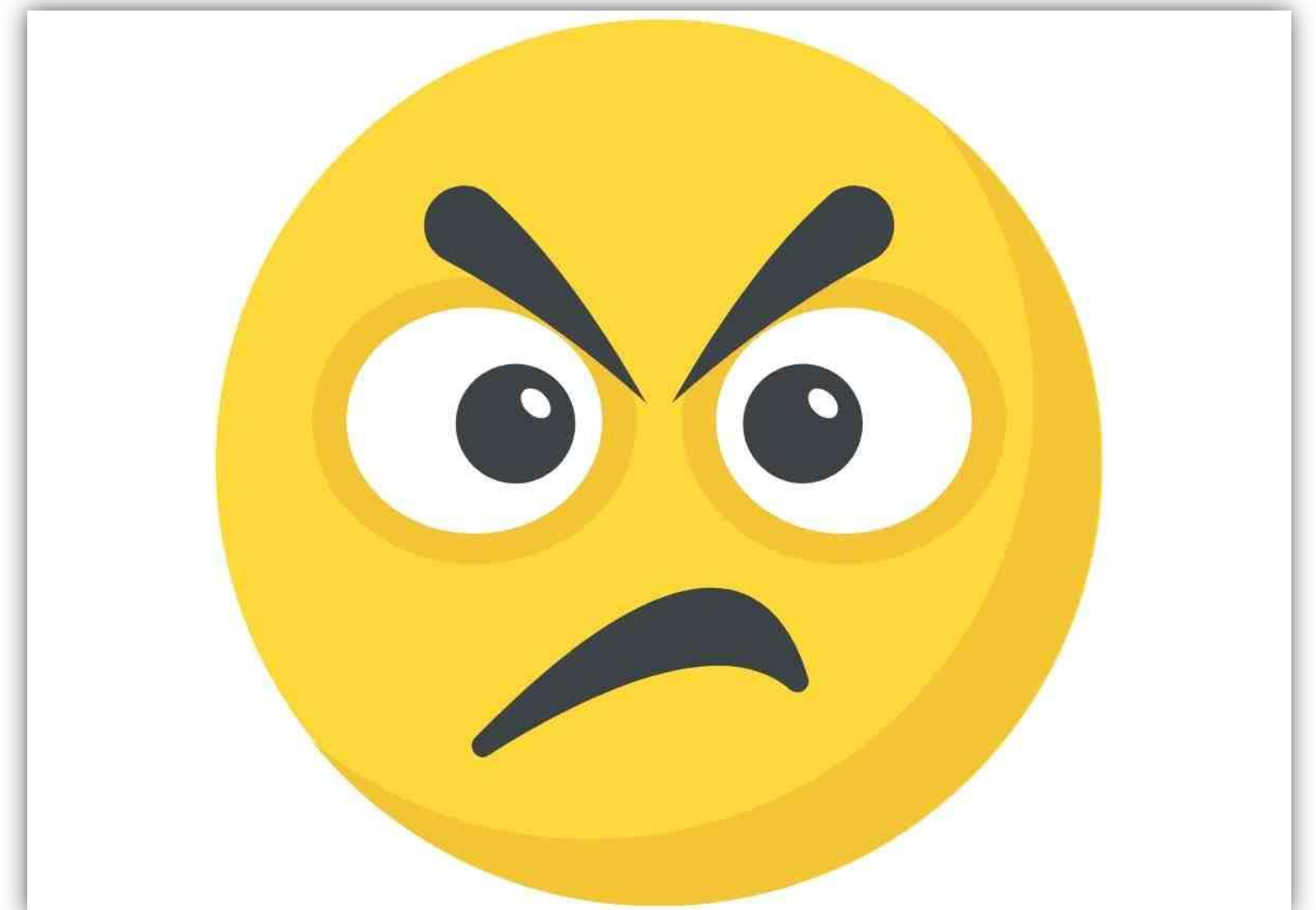
7. Do you like wet weather?

If I am staying at home, then I love it when **it's raining heavily**. I love the sound of the rain. If I'm going out, it's **a nuisance** though.



NATIVE SPEAKERS OF ENGLISH

Prepare for {IELTS}



the latter/the former = the first thing/the last thing

heavy rain = when it's raining hard

window pane = the glass in the window

soothing = calming; relaxing

8. Do you prefer wet or dry weather?

Definitely **the latter** unless I'm staying at home. The sound of **heavy rain** on the **windowpane** is quite **soothing**.



NATIVE SPEAKERS OF ENGLISH

Prepare for {IELTS}



absolutely = 100%

to chill = to relax

to recharge my batteries = to regain energy

9. Would you like to visit a hot country?

Oh yes, **absolutely**... If I'm going on holiday then I prefer to be in a hot place so I can **chill** by the pool and **recharge my batteries**.



NATIVE SPEAKERS OF ENGLISH

Prepare for {IELTS}

