

➤ Questions

1. Do you like science?
2. When did you start learning about science?
3. Which science subject is interesting to you?
4. Do you like watching science programmes on TV?
5. Do people in your country like visiting science museums?



Please Note:

Our model answers teach you useful language and give you ideas. However, it is not a good idea to try and memorise them and repeat them in the IELTS exam.

Prepare for {IELTS}

On the whole = generally

to struggle = to find something difficult

to go in one ear and out the other = to forget something immediately

1. Do you like science?

On the whole, I guess so. I'm more interested in biology than physics or chemistry though. I really **struggled** with those subjects at school and **it went in one ear and out the other**.



NATIVE SPEAKERS OF ENGLISH

Prepare for {IELTS}



if my memory serves me right
= if I remember correctly

more emphasis/focus on = this
was seen as more important
and so we did it more

the theory = what is believed
to be true

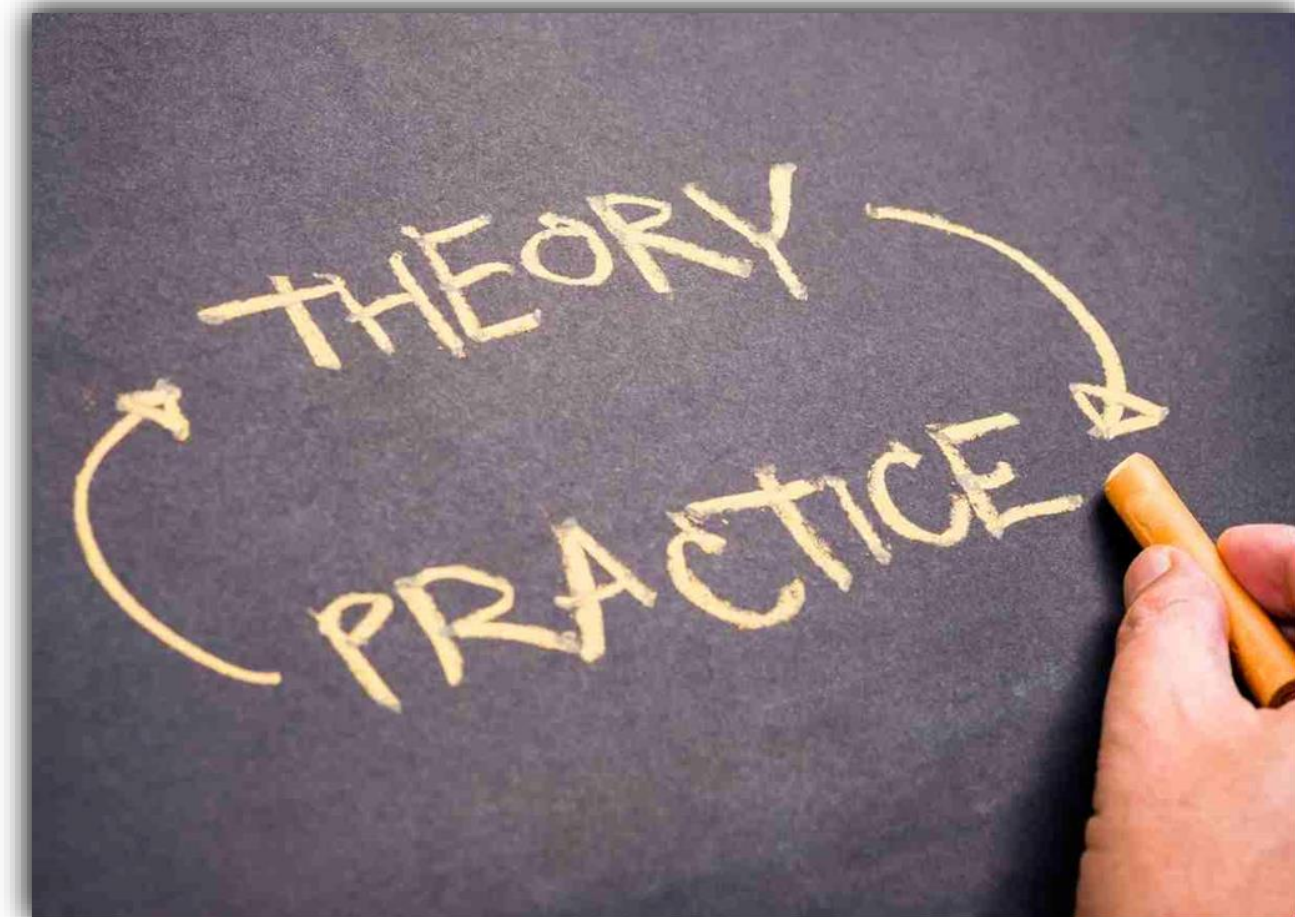
2. When did you start learning about science?

If my memory serves me right, it was in primary
school. We did a lot of practical lessons in primary,
which I thoroughly enjoyed and then in secondary,
there was **more emphasis/focus on** the **theory**
sadly.



NATIVE SPEAKERS OF ENGLISH

Prepare for {IELTS}



I'm not a massive fan of = I don't like

to be perfectly honest = honestly

if pushed, I guess I'd go for = if I have to choose...

aspect = part

3. Which science subject is interesting to you?

I'm not a massive fan of any science subjects, **to be perfectly honest**, but **if pushed**, I guess I'd go for biology. To be more specific, I would say I find human biology the most interesting **aspect**.



NATIVE SPEAKERS OF ENGLISH

Prepare for {IELTS}



as a rule = usually

I'm so snowed under with = I'm very busy

lighthearted = happy; relaxed; cheerful; upbeat

to chill out = to relax

4. Do you like watching science programmes on TV?

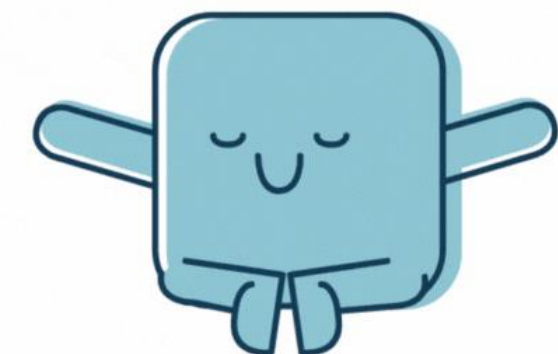
Not really, **as a rule**. **I'm so snowed under with** work at the moment that I rarely watch TV, so when I have a bit of free time, I tend to watch something more **lighthearted** to help me **chill out**.



NATIVE SPEAKERS OF ENGLISH

Prepare for {IELTS}

relax



I'm not entirely sure = I don't know

I assume = I guess; I think this is true

to frequent /fri'kwɛnt/ = to visit

5. Do people in your country like visiting science museums?

I'm not entirely sure. It's not something I've ever thought about before. There are a few famous science museums so **I assume** there must be quite a lot of people who **frequent** them.



NATIVE SPEAKERS OF ENGLISH

Prepare for {IELTS}

