

Questions

1. Do you like wearing jewellery?
2. How often do you wear it?
3. What type of jewellery do you like to buy?
4. Do you wear a lot of jewellery?
5. Have you ever given someone jewellery as a gift?
6. Why do some people choose to buy expensive jewellery?

Please Note:

Our model answers teach you useful language and give you ideas. However, it is not a good idea to try and memorise them and repeat them in the IELTS exam.

Prepare for {IELTS}

a special occasion = e.g. a party, a wedding etc

to accessorise = to add other things to something in order to make it look more attractive

bling = jewellery or decoration that attracts attention because it is very noticeable and looks expensive

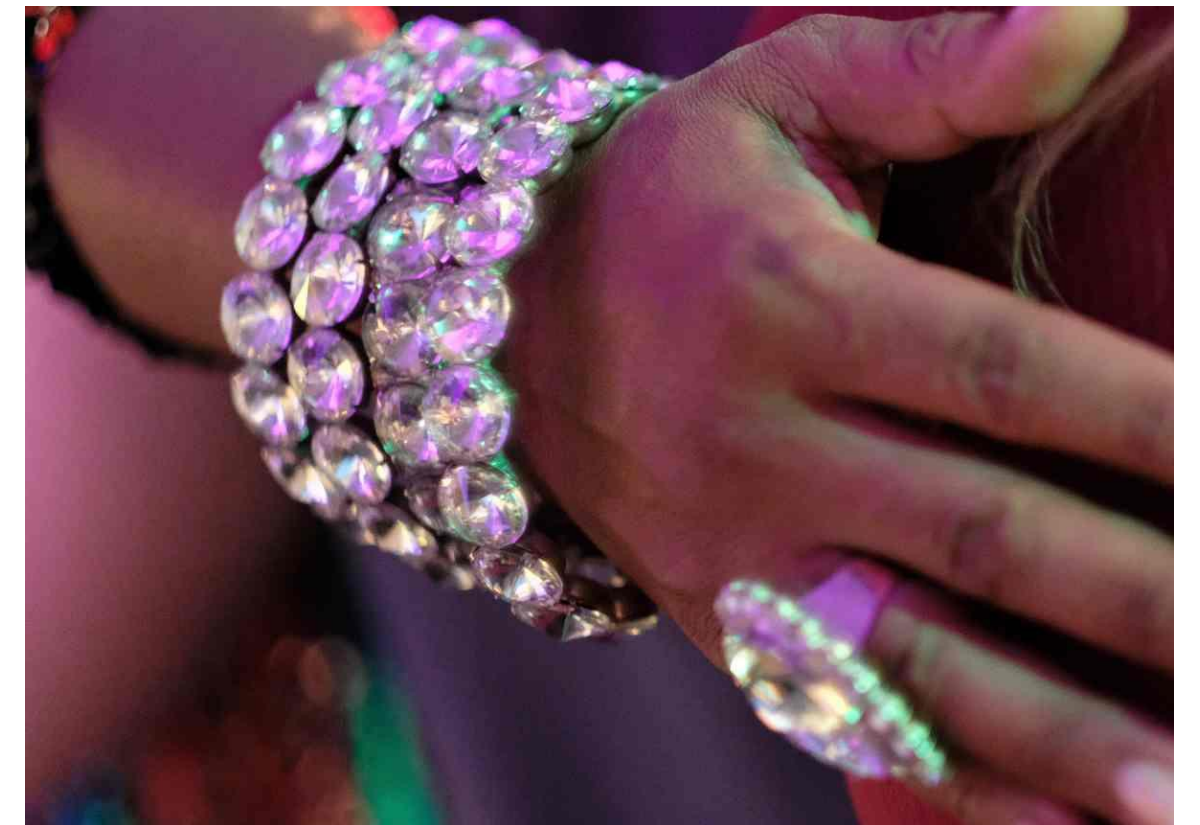
1. Do you like wearing jewellery?

I do if it's **a special occasion**. I like **to accessorise** with jewellery. I'm not a person who wears lots of **'bling'** though.



NATIVE SPEAKERS OF ENGLISH

Prepare for {IELTS}



I tend to wear = I usually wear

on a daily basis = every day

From time to time = occasionally;
sometimes

to dress up = to dress in smart or
formal clothes

an event or function = an official
ceremony or a formal social event,
such as a party or a special meal, at
which a lot of people are usually
present

2. How often do you wear it?

I tend to wear a watch **on a daily basis** and a
necklace, which **was given** to me by my
grandmother. **From time to time**, if **I'm dressing up**
for **an event or function**, then I wear a few more
items.



NATIVE SPEAKERS OF ENGLISH

Prepare for {IELTS}



an awful lot = a very large amount

to be perfectly honest = honestly

relatives = members of your family

3. What type of jewellery do you like to buy?

I don't buy **an awful lot**, **to be perfectly honest**. All of the jewellery that I own **has been given** to me by friends or **relatives**.



NATIVE SPEAKERS OF ENGLISH

Prepare for {IELTS}



the occasion = the time or the event

As a (general) rule = usually

at times = sometimes

4. Do you wear a lot of jewellery?

I guess it depends on **the occasion** – sometimes I do and sometimes I don't. **As a rule**, I'd say no but **at times**, I do.



NATIVE SPEAKERS OF ENGLISH

Prepare for {IELTS}



From memory = from what I can remember without checking

tricky = difficult

gift cards = a card that can be exchanged in a shop or on a website for goods or services of the value that is printed on it

5. Have you ever given someone jewellery as a gift?

From memory, no I don't think so. I find it quite **tricky** to buy things for others because I'm always worried that I'll get the wrong size. I tend to give **gift cards** so they can buy it themselves.



NATIVE SPEAKERS OF ENGLISH

Prepare for {IELTS}



a status symbol = a thing that people want to have because they think other people will admire them if they have it

wealth = how much money they have

well off = rich

a lie = not true

a waste of money = a bad use of money

6. Why do some people choose to buy expensive jewellery?

I guess it's **a status symbol**. It shows their **wealth** and power. If I was **well off**, then I would buy a Rolex – no, that's **a lie**, I think they're **a waste of money**.



NATIVE SPEAKERS OF ENGLISH

Prepare for {IELTS}

